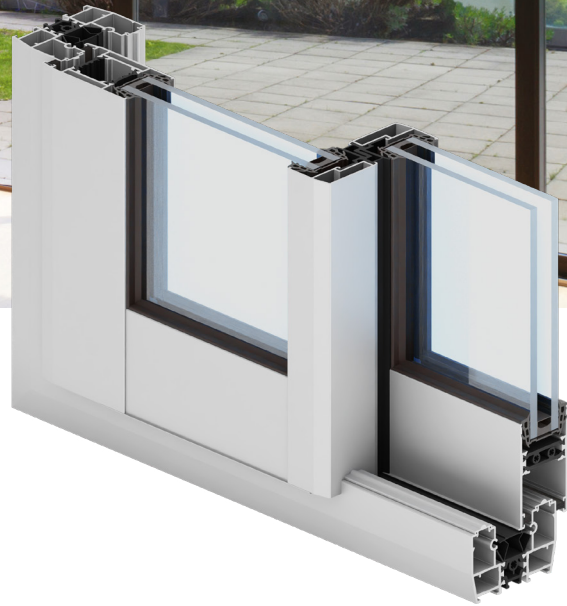




sliding system



Modern Slide

- the system featuring improved thermal performance is used to design sliding structures
- the solutions offered by the Modern Slide system make are suitable for designing sliding structures on 2-, 3- and 4-rail frames
- the galandage solution makes it possible to hide almost completely sliding leaves in the building wall to maximise the clear opening once the structure leaves are opened
- available solution: monoblock
- the width of the joint between two structure leaves is only 35 mm; the profiles are available in 3 versions suitable for various resistance-related requirements
- there is a possibility of use Flyscreen system and Insect System (fly screens are a practical and an extremely functional protection against insects)
- a wide range of colours – RAL palette (Qualicoat 1518), texture colours, Aliplast Wood Colour Effect (wood-like colours), Aliplast Loft View – colours imitating stone surfaces (Qualideco PL-0001), anodised colour (Qualanod 1808), bi-colour

sliding system

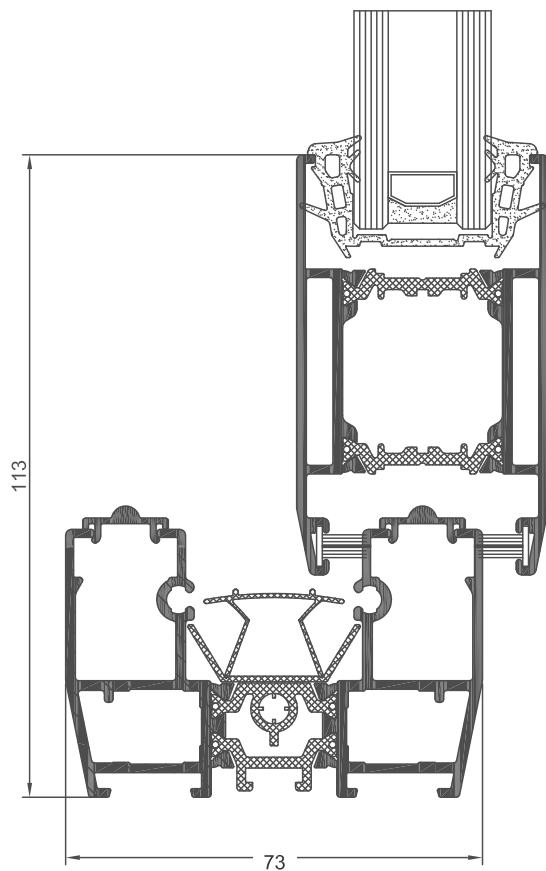
technical specification

system	material	depth of frame	depth of leaf	glazing range	weight of leaf	type of doors
MDS	aluminium/polyamid	73,8-195,9 mm	44 mm	24 mm / 28 mm / 32 mm	to 250 kg	sliding

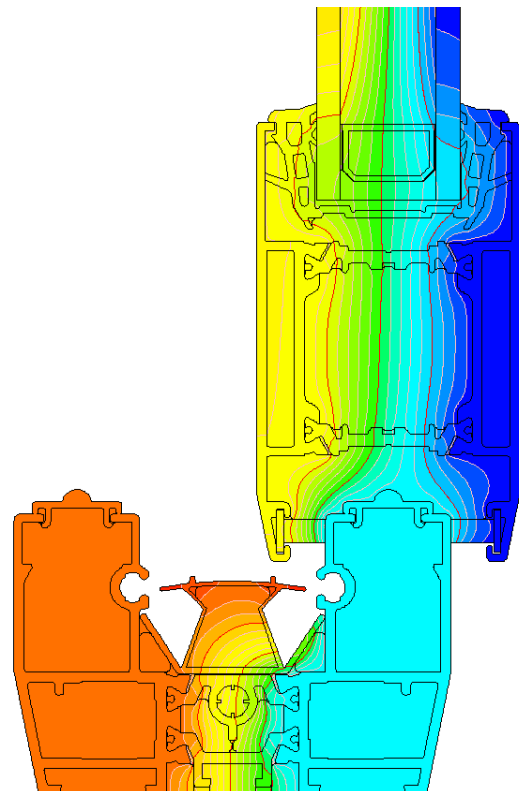
performance

system	thermal insulation Uf*	air permeability	windload resistance	watertightness
MDS	Uf from 1,50 W/m ² K	Class 3; EN 12207	Class C1 (400 Pa); EN 12210	Class 6A (250 Pa); EN 12208

* Thermal insulation is dependent on a combination of profiles and thickness of the filling.



MDS cross-section of the door frame and leaf on the external rail (MDS010 + MDS022)



distribution of isotherms for frame with sash composition in the MDS system (MDS010 + MDS022)